

Format and Guidelines of Full Paper for the 33rd Conference of the Mechanical Engineering Network of Thailand

Author A¹, Author B² and Author C^{1*}

¹ Academic or Business Affiliation, Address, City, Province, Zip Code

² Academic or Business Affiliation, Address, City, Province, Zip Code

*Corresponding Author: E-mail, Telephone Number, Fax. Number

Abstract

The instructions below are described to guide authors who wish to submit a manuscript to the 33rd Conference of the Mechanical Engineering Network of Thailand. The submitted manuscript must be clear, concise, and well agree with the conference template to obtain the consistent form with other papers, therefore it can be collected in the conference CD-ROM proceedings uniformly. Use this document as a template if you are using MS Word. Otherwise, use this document as a guideline to setup your manuscript.

Keywords: 3 – 5 keywords should be provided here to assist with indexing of the article.

1. Introduction

This instruction gives you guidelines for preparing full papers for the 33rd Conference of the Mechanical Engineering Network of Thailand. Please use this document as a template and adhere strictly to the following guidelines and format to assure rapid production of high quality conference proceedings book and CD-ROM. Firstly, extended abstracts should be submitted to the committee. After the extended abstract was accepted then the full paper should be submitted to the committee. Finally, after the notification of full paper acceptance, the “camera-ready” manuscript will be required. The typography, layout and style are exactly the same as those used in this instruction. Papers which do not comply with it (especially in layout geometry and typesetting) will not be included in the proceedings. No final correction will be made by the publisher.

2. Preparation

Full paper should contain title, author name(s) and affiliation(s), abstract (with 3 – 5 keywords), main body which is detail of research, acknowledgements and references. The whole length is 5 – 8 pages of A4.

The main body of full paper can be divided into sections and (optionally) subsections with sub-subsections.

All fonts must be in TH SarabunPSK. Do not put page number in the manuscript

2.1 Page size and format

The size of the manuscript must be A4 (210 mm x 297 mm) and it should be typed in two columns with single spacing and the following margins.

Top margin	25 mm
Bottom margin	20 mm
Left margin	25 mm
Right margin	20 mm
Column width	78 mm
Column separation	9 mm

2.2. Title and author(s) information

All items in the title block should be centered across both columns. The title should be set in 18 pt bold type. The first letter of each word should be capitalized (do not capitalize articles, coordinate conjunctions or prepositions unless the title begins with such a word).

The author’s name(s) should be set in 14 pt font and the list of affiliations should be set in 12 pt font. The affiliations should include department, university and

address. For each author, a numbered superscript should be used to indicate institution affiliation. The corresponding author should be indicated by the asterisk “*” symbol and the presenting author should be identified by name underlining. The corresponding author’s telephone/fax numbers and e-mail address should be provided as the final item in the title block.

3. Abstract and Keywords

The abstract should be typed in 12 pt font followed by a list of keywords. The titles of abstract and keywords are typed in 11 pt Italic bold font.

4. Main Text Body

The full text of the paper (except the abstract) must be edited in the double column format as required and fully justified (flush left and flush right). All fonts are set in 12 pt font. Please do not place any additional blank lines between paragraphs. Headings and subheadings appear throughout the text should not exceed 3 levels.

4.1 Heading

4.1.1 First-order headings

The first-order headings, usually called section, should be boldface, initially capitalized and centered.

4.1.2 Second-order and third order headings

The second-order headings (sub-sections) and the third-order headings (sub sub-section) should be boldface, initially capitalized and flush left.

5. Figure, Table and Equation

5.1 Figure and Table

All figures and tables should be placed after their first mention in the text. Large figures and tables may span across both columns. Place figure captions below the figures and centered within a column. Place table titles above the tables and flush left. If figure has two parts, include labels “(a)” and “(b)” as part of the artwork. Please verify that the figures and tables mentioned in the text actually exist. When citing a figure(s) in the text, they should be referred as, for example, “Fig. 1” or “Figs. 1 – 3.” Or Table. 1. Do not abbreviate “Table”.

5.2 Equations

Equations should be placed about center and numbered consecutively. Equation numbers should be Arabic numerals enclosed in parentheses on the right-hand margin. They should be cited in the text as, for example, “Eq. (1)” or “Eqs. (1) – (3)”. Be sure that the symbols in equations are defined before the equation appears or immediately followings.

$$y = ax^2 + bx + c \quad (1)$$

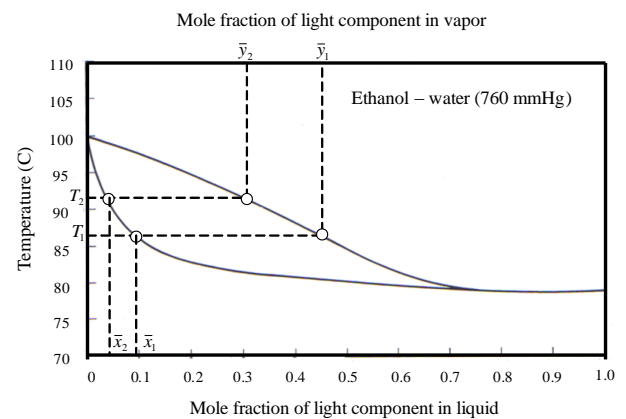


Fig. 1 Vapor-liquid equilibrium of binary mixture at constant pressure

Table. 1 Total petroleum products consumption (million liters) in Thailand by economic sector

Economic sector	Year	
	2002	2003
1. Agriculture	3,509	3,827
2. Mining	19	26
3. Manufacturing	4,821	4,937
4. Electricity	703	757
5. Construction	169	172
6. Residential and commercial	2,729	2,792
7. Transportation	23,980	25,475
Total	35,930	37,986

6. Acknowledgement

Acknowledgements may be made to individuals or institutes who have made an important contribution.



7. References

The relevant works must be cited and listed as references at the end of the paper, in order of citation. They should be chronologically referred in the text by Arabic numerals enclosed in square brackets, e.g. [1], [1, 2], [1-3]. The reference list should be set in the same type face as the body of the text. Some example of the references to journal papers, proceedings, technical reports, books and web-based articles are illustrated as follows:

7.1 Article in Journals

- [1] Kar, A. and Kanoria, M. (2009). Generalized thermo-visco-elastic problem of a spherical shell with three-phase-lag effect, *Applied Mathematical Modelling*, vol.33(8), August 2009, pp. 3287 – 3298.
- [2] Waszkiewics, S.D., Tierney, M.J. and Scott, H.S. (2009). Development of coated, annular fins for adsorption chillers, *Applied Thermal Engineering*, vol. 29(11-12), August 2009, pp. 2222 – 2227.

7.2 Proceedings

- [1] Kato, S. and Widiyanto, A. (2001). Environmental Impact Assessment of Various Power Generation Systems, paper presented in *the Tri-University International Joint Seminar & Symposium 2001*, Chiang Mai, Thailand.
- [2] Jungmeier, G. (2001), LCA for Comparison of Greenhouse Emission of Bioenergy and Fossil Energy System, paper presented in *the 8th Meeting of COST E9-Working Group 3*, Montpellier, France.

7.3 Reports

- [1] Craglia, M. and Annoni, A. (2003). The Spatial Impact of European Union Policies, EUR 20121 EN, Ispra: European Communities.
- [2] Division of Technical Services and Planning, Chiang Mai City Municipality (2003), *Annual Report 2003*.

7.4 Books

- [1] Myers, R.H. and Montgomery, D.C. (1995). Response Surface Methodology: Process and product optimization using designed experiments, John Wiley & Sons, New York.
- [2] Goswami, Y.D., Kreith, F. and Kreider, J.F. (1999). *Principles of Solar Engineering*, 2nd edition, ISBN: 1-56032-714-6, Taylor & Francis, Philadelphia.

7.5 Web-Based Articles

- [1] Department of Alternative Energy Development and Efficiency, Ministry of Energy, Thailand (2004). *Statistic Data*, URL: <http://www.dede.go.th>, access on 24/04/2010
- [2] Spath, P.L. and Mann, M.K. (2002), *Life Cycle Assessment of a Natural Gas Combined-Cycle Power Generation System*, NREL/TP-570-27715, National Renewable Energy Laboratory, Colorado, USA, URL:<http://www.doe.gov>, access on 24/04/2010

8. Submission

Authors are required to submit their full paper via only online submission system. The full paper should be in MS Word format. Finally, after the notification of full paper acceptance, the “camera-ready” manuscript will be required.

Please make sure that your file is printable and the printout is looked fine, before processing the online-submission. The completion of file is self-responsibility of author(s). The committee will not accept the incomplete file.

The date of submission is full manuscript submission until 22 April 2019. Anyway the schedules may be changed, please occasionally check the information on website at <http://www.tsme.org/me-nett/me-nett2019/index.html>